



SERVICE BULLETIN

NUMBER: SB 500-52-007, REV A
MODEL: ECLIPSE EA500
SUBJECT: LOWER CABIN DOOR STEP CABLE RESTRAINT

1. PLANNING INFORMATION

A. Effectivity

Aircraft Serial Numbers (S/N) 000001 through 000073.

B. Reason

Lower cabin door step cable may dislodge from sector assembly.

C. Description

This Service Bulletin (SB) secures the lower cabin door step cable to the sector assembly.

D. Compliance

Eclipse Aviation Corporation considers this to be a recommended upgrade that can be accomplished at the operator's discretion.

E. Approval

This Service Bulletin is based on engineering data that is FAA-approved, and the modification herein complies with the applicable regulations.

F. Labor Requirements

The following information is for planning purposes only.

(1) Estimated labor hours to perform:

Suggested number of personnel: 1

Remove, rework, and install sector: 4 Hours

Total labor hours: 4 Hours

The above is an estimate based on properly equipped and experienced personnel complying with this Service Bulletin. Actual labor hours may vary depending on workforce experience, concurrent maintenance, discovery of other discrepancies, etc.

(2) Qualification of personnel:

- A person properly authorized under 14 CFR 43 to perform aircraft maintenance.



SERVICE BULLETIN

G. References

Aircraft Maintenance Manual (AMM) P/N 06-117751, latest revision.

H. Publications Affected

Aircraft Maintenance Manual (AMM) P/N 06-117751, latest revision.

2. MATERIAL INFORMATION

A. Materials

No parts and/or kits need to be ordered for this Service Bulletin..

B. Consumables

The following consumables are required for this Service Bulletin.

Material	Specification	Use
Safety Wire	MS20995C32	Secure lower cabin door step cable.

C. Tooling

The following special tooling/support equipment is required to accomplish this Service Bulletin.

Nomenclature	Specification	Use
Drill	N/A	Impart rotational force to drill bit.
Drill Bit	3/64" diameter	Drill hole into sector.

3. ACCOMPLISHMENT INSTRUCTIONS

A. Procedure

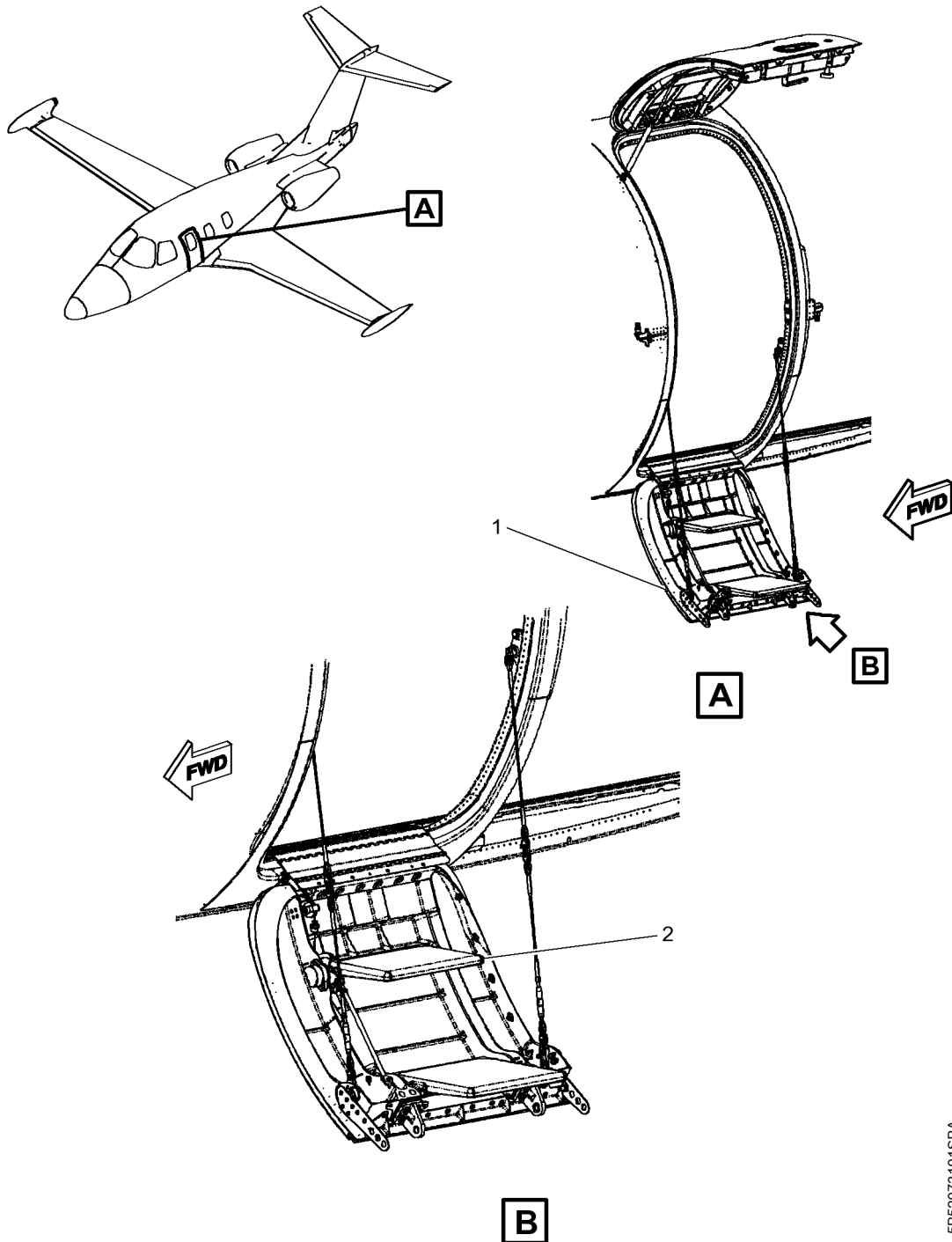
- (1) Make aircraft safe for maintenance. Refer to AMM 20-00-01.
- (2) Do Job Set-Up. Refer to SUBTASK AMM 52-60-10-001-921-001.
- (3) Remove upper step assembly (2, Figure 1) from lower door (1, Figure 1). Refer to step A of SUBTASK AMM 52-60-10-001-001-001.
- (4) Drill 0.047 (+/-0.005) diameter hole through both flanges of sector P/N 52-115033-1001. Refer to Figure 2.
- (5) Install upper step assembly. Refer to step A of SUBTASK AMM 52-60-10-041-411-001.
- (6) Insert MS20995C32 safety wire (3, Figure 3) through holes in sector P/N 52-115033-1001 (2, Figure 3) to secure step cable (1, Figure 3).
- (7) If all other maintenance is complete, return aircraft to service. Refer to AMM 20-00-02-051-921-001.



ECLIPSE
AVIATION

RECOMMENDED

SERVICE BULLETIN



Lower Cabin Door Assembly
Figure 1

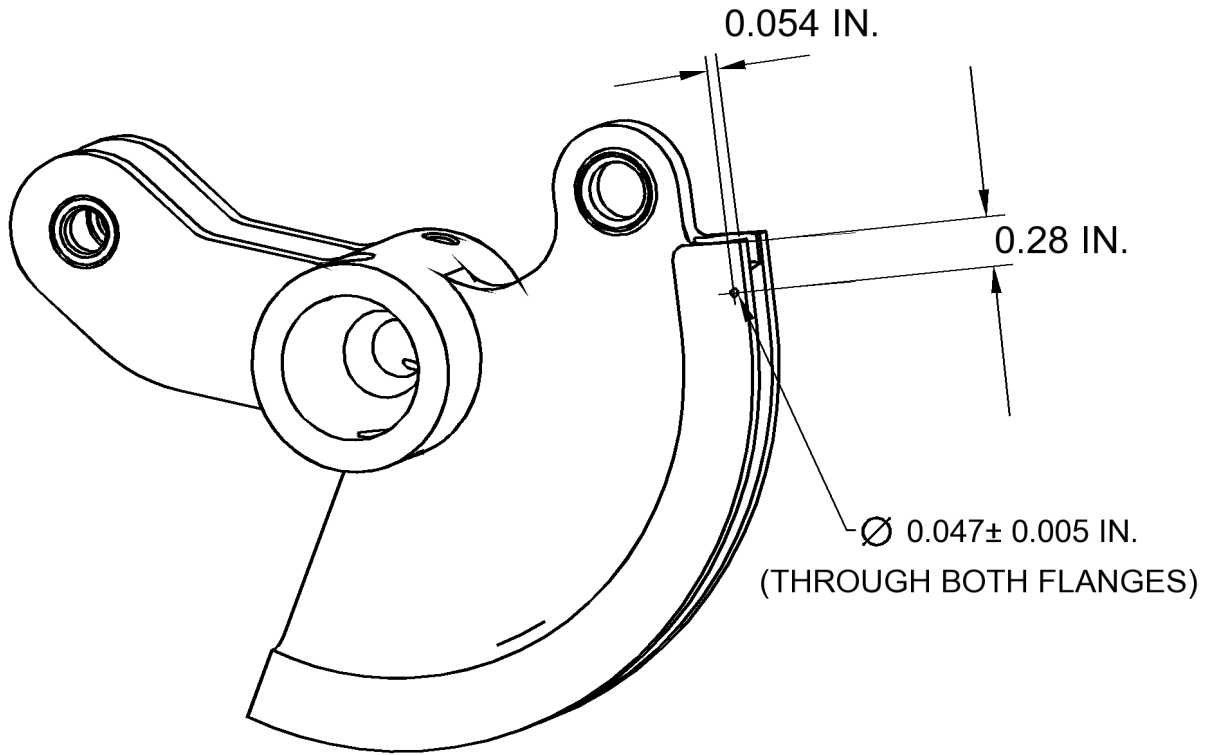
5B52073101SBA



ECLIPSE
AVIATION

RECOMMENDED

SERVICE BULLETIN



5B52073104SBA

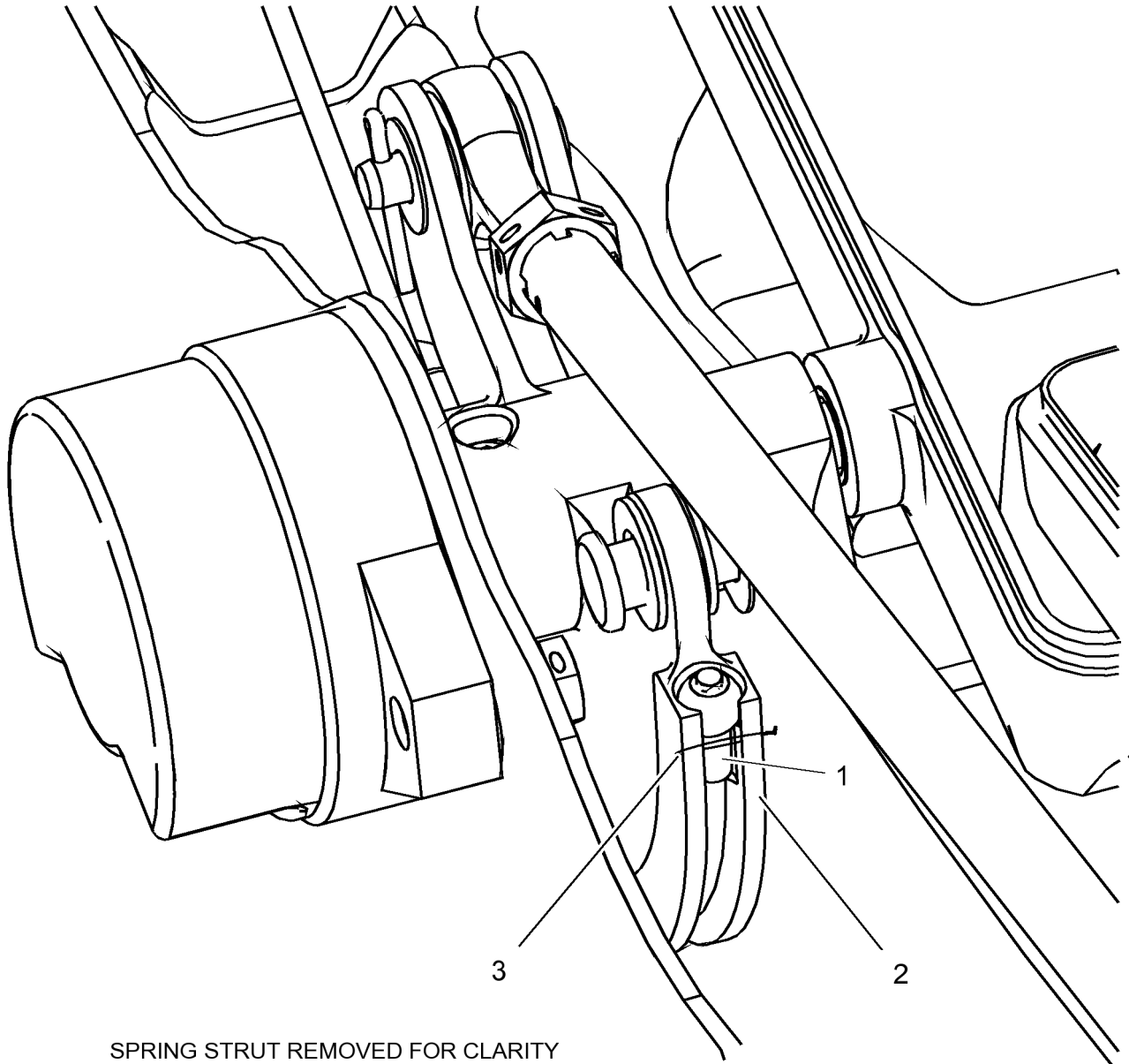
**Sector Assembly P/N 52-115033-1001 Modification
Figure 2**



ECLIPSE
AVIATION

RECOMMENDED

SERVICE BULLETIN



SPRING STRUT REMOVED FOR CLARITY

**Sector Safety-Wire Installation
Figure 3**

5B52073103SBA



ECLIPSE
AVIATION

RECOMMENDED

SERVICE BULLETIN

B. Cost

Parts and Labor will be supplied by Eclipse Aviation Corporation at no charge to the aircraft owner.

4. RECORD OF COMPLIANCE

Upon completion of this Service Bulletin, make an appropriate maintenance-record entry specifying the Service Bulletin number.

5. NOTIFYING ECLIPSE AVIATION

On completing this service bulletin, the operator/maintainer shall complete the attached Compliance Record and send it to Eclipse Aviation via regular mail, fax, or e-mail.

MAILING ADDRESS	Eclipse Aviation Corporation ATTN: Customer Care 2503 Clark Carr Loop SE Albuquerque, NM 87106
Fax	1-505-241-8802
E-mail	customer care@EclipseAviation.com

